

# Welcome to North High School!



Imagine  
With all  
your mind.  
Believe  
With all  
your heart.  
Achieve  
With all  
your might.



# Programs & Related Services



## *Programs*

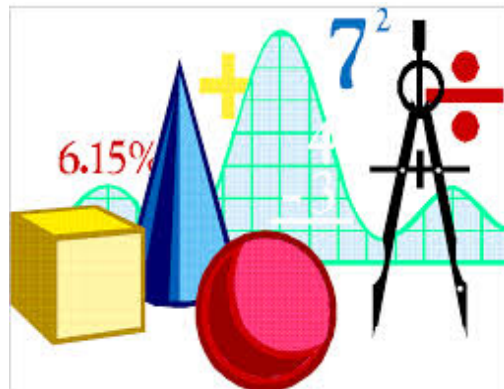
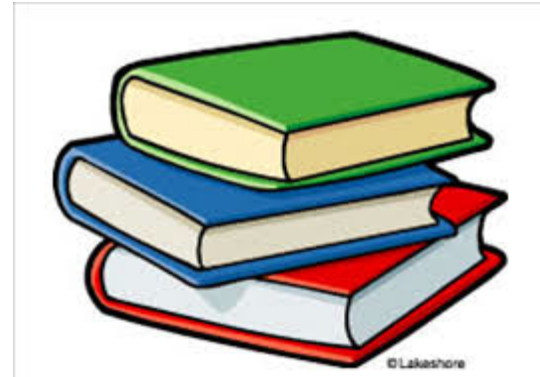
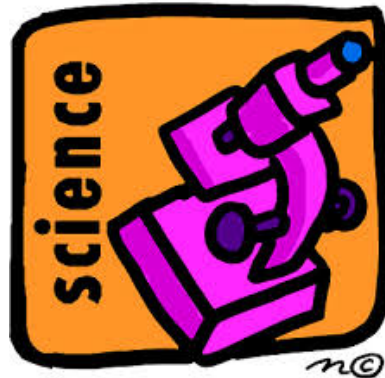
- Resource Room (5:1)
- Team Taught Classes
- Foundations (15:1:1)
- Essential Skills (12:1:1)
- ACE Class (6:1:1)
- ACE Transition Class (12:1:1)

## *Related Services*

- Speech & Language
- Occupational Therapy
- Physical Therapy
- Counseling (Group & Individual)

# Building-Level Services

- Math Lab
- Study Skills
- Writing Conferences



# How might your child's IEP be implemented?

## *Sample 9<sup>th</sup> Grade Schedule*

Period	Term 1	Term 2	Term 3	Term 4
1	Global 9 Team	Global 9 Team	Global 9 Team	Global 9 Team
2	English 9 Team	English 9 Team	English 9 Team	English 9 Team
3	English Acad. Supp. (Day 1) Global Acad. Supp. (Day 2)	English Acad. Supp. (Day 1) Global Acad. Supp. (Day 2)	English Acad. Supp. (Day 1) Global Acad. Supp. (Day 2)	English Acad. Supp. (Day 1) Global Acad. Supp. (Day 2)
4	Health	Health	Elective	Elective
5	Physics 9 Team	Physics 9 Team	Physics 9 Team	Physics 9 Team
6	Physics Acad. Supp. (Day 1) Physics Lab (Day 2)	Physics Acad. Supp. (Day 1) Physics Lab (Day 2)	Physics Acad. Supp. (Day 1) Physics Lab (Day 2)	Physics Acad. Supp. (Day 1) Physics Lab (Day 2)
7	Lunch	Lunch	Lunch	Lunch
8	Alg. Lab (Day 1) Phys. Ed. (Day 2)	Alg. Lab (Day 1) Phys. Ed. (Day 2)	Alg. Lab (Day 1) Phys. Ed. (Day 2)	Alg. Lab (Day 1) Phys. Ed. (Day 2)

# Extra Help Schedule

Monday

- Science, Technology, & Health

Tuesday

- Social Studies

Wednesday

- Art, English, & World Languages

Thursday

- Mathematics & Reading

By Appointment

- Computers, Family and Consumer Sciences, Music, Physical Education, Special Education, & Speech and Language

Monday

- English, Music, & Reading

Tuesday

- World Languages, Art, Health, & Computers

Wednesday

- Social Studies & Family and Consumer Sciences

Thursday

- Science, Mathematics, & Technology

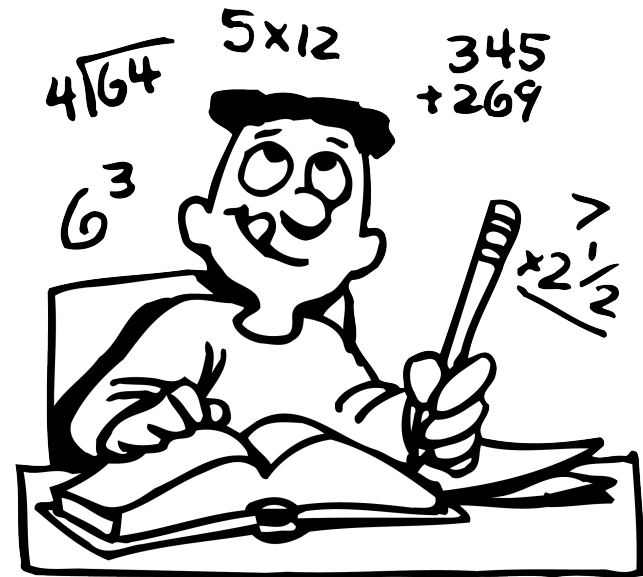
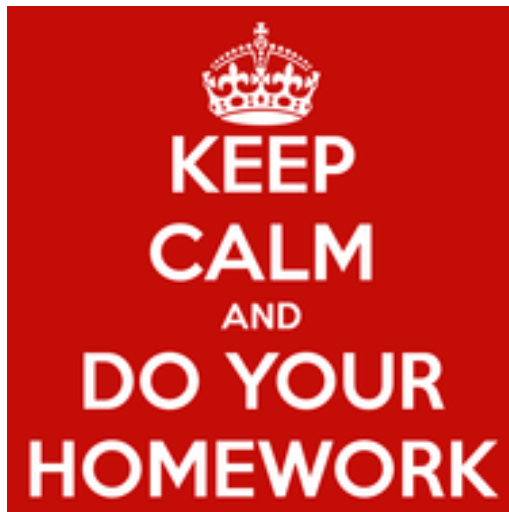
By Appointment

- Physical Education & Speech and Language

# Homework Help Center

Homework Help

- Monday – Thursday  
2:36PM – 3:15PM  
Library Classroom





# Testing Days



## Fall

Monday

\* Math, Health

Tuesday

\* English, Business, FACS

Thursday

\* Science, Language

Friday

\* Social Studies, FPA

## Spring

Monday

\* Social Studies, FPA

Tuesday

\* Math, Health

Thursday

\* English, Business, FACS

Friday

\* Science, Language

# · Advisory Program

- Group meetings are on Wednesdays and consist of a wide range of activities and discussions that lead to a greater sense of “connectedness” with the school.
- \*Each group is led by a team consisting of one faculty member and a pair of student peer leaders.
- At present there are 40 faculty advisors, 100 peer leaders, and 7 peer leadership course instructors that serve more than 450 students.





# **Check Out Our Websites!**

Great Neck North High School

- <http://www.greatneck.k12.ny.us/GNPS/NHS/>

Great Neck South High School

- <http://www.greatneck.k12.ny.us/GNPS/SHS/>

# Questions & Answers

- Who develops the IEP for students as they transition from 8<sup>th</sup> to 9<sup>th</sup> grade?
- Who oversees a student's special education program?
- Who are the special education contact people at each high school?
- What are some challenges specific to high school?

# **Our Contact Information**

Tom Mangan

Department Head of Special Education at NHS

(516) 441-4756

[tmangan@greatneck.k12.ny.us](mailto:tmangan@greatneck.k12.ny.us)

Jim Morrow

Department Head of Special Education at SHS

(516) 441-4656

[jmorrow@greatneck.k12.ny.us](mailto:jmorrow@greatneck.k12.ny.us)

thank  
you!